

SERENA DELUXE

Rise & Recliner


Restwell.

*"Comfortable four tier
waterfall back design"*



CE

The Serena Deluxe Riser Recliner features a well-padded four tier waterfall back design which provides a high level of comfort and support, making this chair ideal for most users.

www.restwellchairs.co.uk

driveTM
www.drivemedical.co.uk

The Serena Deluxe Riser is a spacious chair featuring a dual motor mechanism, which will provide you with countless recline options to assist in finding the most comfortable and relaxing position possible.



Superb Comfort, Style & Performance...

- » Four tier waterfall back design provides extra comfort and support.
 - » Two motors enable legrest to be elevated / lowered and backrest to be reclined independently to give more flexible support options.
 - » Backrest can be positioned upright while legrest is elevated, for example to watch TV.
 - » Quality assured, meeting all relevant fire retardancy standards.
 - » It will rise and tilt users to their feet.
 - » Excellent snooze position for supreme comfort and relaxation.
 - » Quiet motors provide a smooth and discreet operation.
 - » Ergonomically contoured seat and back and padded upholstery for added comfort and support.
 - » Fully padded chaise for increased comfort.
 - » Two convenient side pockets for easy storage.
 - » Protective, washable head and armrest covers.
 - » In-built fail safe battery back-up system which enables the chair to be raised and lowered in the event of a power failure*.
 - » Anti-entrapment sensors to prevent anything getting caught in the chair's mechanism.
 - » Comes with a simple to operate handset.
 - » Stitched handset holder to prevent loss or damage to the handset.
 - » Ideal for individuals who have difficulty standing up and sitting down due to restricted mobility e.g. those with MS, Arthritis, Rheumatism, circulation problems.
 - » Available in 4 colour options - Cinnamon, Mocha, Oatmeal and Floral.
 - » 2 year warranty on wooden frame and electrical components.
 - » Maximum weight capacity 160kg (25st).
- * Batteries included.

SERENA DELUXE

CODE: 923WABE

Max Weight Capacity:
160kg (25st)



Height:
115cm (45")



Width:
98cm (39")



Depth:
91cm (36")



Seat Depth:
48cm (19")



Seat Height:
47cm (19")

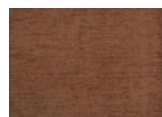


Seat Width:
54cm (21")

Colour Options:



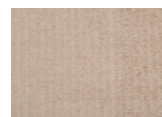
Cinnamon



Mocha



Floral



Oatmeal

Leaflet Code: LL185 If you would like to view this product please contact your local stockist, details below.

